



HELLO!

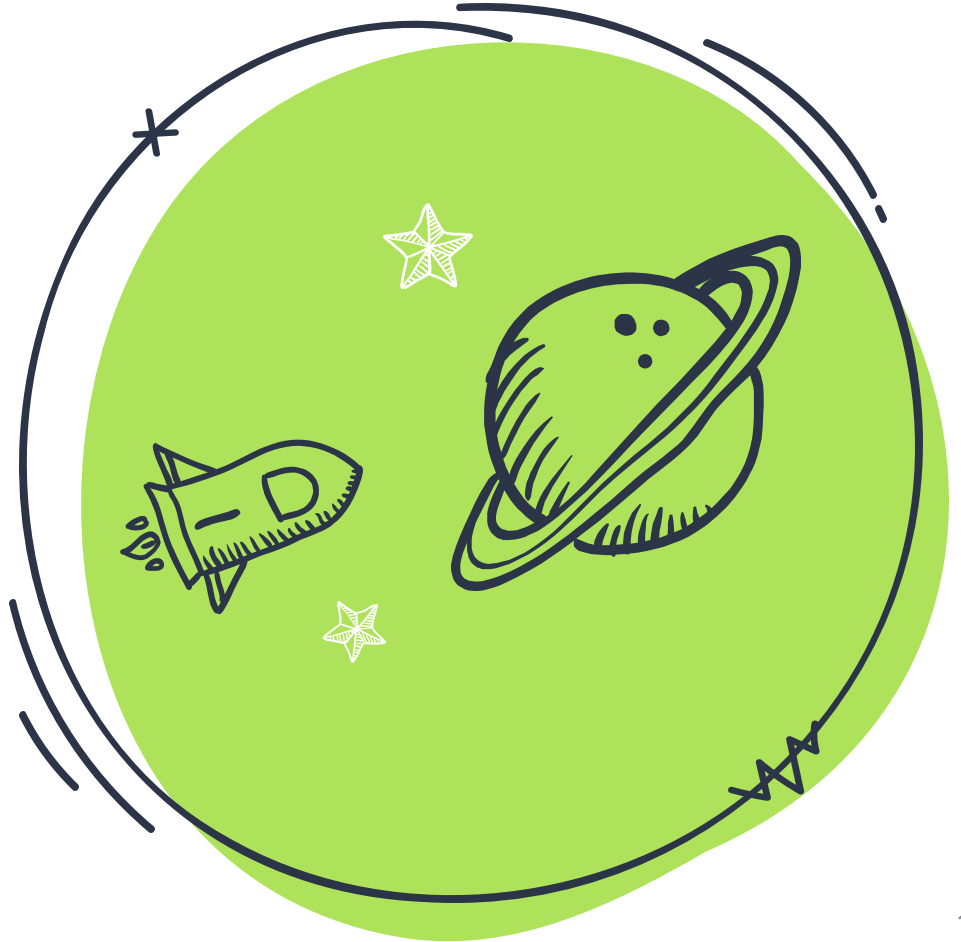
WE WANT TO PROVIDE YOU WITH INFORMATION ABOUT THIS
WONDERFUL OPPORTUNITY AND ANSWER ANY QUESTIONS THAT YOU
MAY HAVE.





WHAT IS DESTINATION IMAGINATION?

IT'S A "GLOBAL EDUCATIONAL
NONPROFIT DEDICATED TO
INSPIRING THE NEXT GENERATION
OF INNOVATORS, LEADERS AND
CREATIVE PROBLEM SOLVERS."



THEIR MISSION:

"TO ENGAGE PARTICIPANTS IN PROJECT-BASED CHALLENGES THAT ARE DESIGNED TO BUILD CONFIDENCE AND DEVELOP EXTRAORDINARY CREATIVITY, CRITICAL THINKING, COMMUNICATION, AND COLLABORATION SKILLS."





NO INTERFERENCE!

LEVELS OF COMPETITION

EARLY LEARNERS K-2ND (NONCOMPETITIVE)

ELEMENTARY 3RD-5TH

MIDDLE 6TH-8TH

SENIOR 9TH-12TH



TEAM CHALLENGES AND INSTANT CHALLENGE

2023-2024 CHALLENGE PREVIEWS:

1. Technical: Pinball Heroes
2. Engineering: Going the Distance
3. Scientific: Blast from the Past
4. Fine Arts: In Motion
5. Improvisational: So Extra
6. Service Learning: Uncharted
7. Early Learning/ Rising Stars: Making a Splash



TECHNICAL CHALLENGE OVERVIEW – PINBALL HEROES

Action, adventure, challenges to overcome! See the lights flashing and listen to the buzzers and bells as your team brings a pinball game to life! Hone your pinball skills and aim for the high score when you try this year's Technical Challenge!

- Design and build a pinball system through which a pinball moves and interacts with 3 machine modules.
- During the Presentation, move the pinball through the pinball system for as long as possible.
- Create and present an action/adventure story about a hero who goes on an extraordinary mission.
- Create and present two Team Choice Elements that show off the team's interests, skills, areas of strength, and talents.



6TH GRADE AND UP:

STUDENTS IN 6TH GRADE OR HIGHER CAN PARTICIPATE IN
THE TEXAS EXTREME CHALLENGE OR ANY OF THE
CHALLENGES LISTED IN THE PREVIOUS SLIDES.

SOME TEXAS EXTREME INFORMATION:

1. WHEN IS TEXAS EXTREME? ~AT THE REGULAR TOURNAMENT IN FEBRUARY
2. WHERE WILL IT BE HELD? ~TBD
3. WHAT IS THE COST? ~THERE IS NO NEED TO BUY A DI TEAM NUMBER. THE COST WILL BE A FLAT RATE OF \$125 PER TEAM.





WANT MORE INFORMATION ON
TEXAS EXTREME?

CONTACT:

STELLA GREER

214-535-2533

SPGREER@VERIZON.NET

HOW DO YOU GET

INVOLVED?



WHAT IT TAKES TO BE A TEAM MANAGER:

ANYONE CAN BE A TEAM MANAGER!

LOCAL TEAM MANAGER TRAINING RIGHT HERE IN KELLER

ONLINE RESOURCES

DI TEAM MANAGER ROAD MAP

TIME COMMITMENT VARIES DEPENDING ON AGE LEVEL AND CHALLENGE



CONNECT WITH US:

[Mid-Cities Destination Imagination Facebook](#)

[Mid-Cities DI Team Managers Facebook Group](#)

Mid-Cities DI Remind

Text @midcitiesd to 81010

www.midcitiesdi.org

SOME MORE RESOURCES TO HELP~

A BREAKDOWN OF EACH
CHALLENGE CAN BE FOUND
HERE:

[CHALLENGE INFORMATION](#)

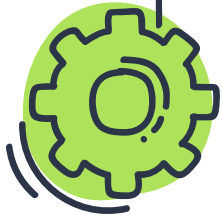
*WE HAVE EVEN MORE DETAILS
FOR EACH CHALLENGE ONCE YOU
DECIDE WHICH ONE YOU WANT
TO DO.

A PARENT INTRODUCTION
VIDEO TO DESTINATION
IMAGINATION IS LINKED
BELOW:

[PARENT'S INTRODUCTION
VIDEO](#)

THE LINK TO THE DESTINATION
IMAGINATION YOUTUBE
CHANNEL CAN GIVE YOU SOME
GOOD EXAMPLES FROM
PERFORMANCES IN THE PAST:

[DI YOUTUBE CHANNEL](#)





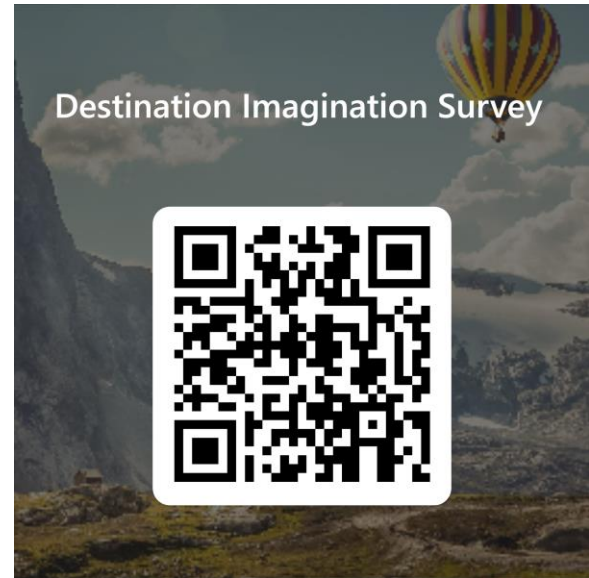
"THE DESIRE TO CREATE IS ONE OF THE DEEPEST YEARNINGS OF THE HUMAN SOUL." -- DIETER F. UCHTDORF

*In Keller ISD, we know that many of our students want more opportunities outside of school to create and use their critical thinking skills. Destination Imagination is a terrific place for students to explore and embrace more of their potential and talents.

This will be parent led, but we want to help you get connected with other parents interested in forming a team. Any number from 2-7 students can make up a group. Rising stars can have up to 9 students in a group.

*Please fill out this form to let us know if you are interested in being a team manager or your child participating:

[DI PARENT INTEREST FORM](#)



DATES TO MAKE NOTE OF FOR DESTINATION IMAGINATION:

FILL OUT THE FORM

OCTOBER 19TH, 6 PM

10/23 TEAMS FINALIZED

PLEASE FILL OUT THE INTEREST FORM BY **OCTOBER 16TH** IF YOU WOULD LIKE TO MANAGE A TEAM AND/OR FIND A TEAM FOR YOUR CHILD.

JOIN US FOR A MEETING ON OCTOBER 19TH FOR BECOMING A TEAM MANAGER OR **JOINING A TEAM.**

TURN IN REQUEST FOR A TEAM NUMBER BY OCTOBER 23RD TO KELLER ISD



COSTS TO BE SPLIT AMONG THE PARENTS OF THE STUDENTS IN A DESTINATION IMAGINATION GROUP:

TEAM MANAGER FEE:

\$25 FOR THE BACKGROUND
CHECK (PAID FOR BY KISD)

TEAM KIT FEE:

\$165
(PAID FOR BY KISD)

SUPPLY FEES:

THE MAXIMUM AMOUNT OF
MONEY SPENT ON SUPPLIES
VARIES A BIT WITH EACH
CHALLENGE. THIS IS GONE
OVER IN GREAT DETAIL
ACCORDING TO WHICH
CHALLENGE YOU CHOOSE.

TEXAS EXTREME (FOR 6TH GRADE AND UP):

\$200 FLAT FEE FOR UP TO 7
STUDENTS (PAID FOR BY KISD)



ON TUESDAY, OCTOBER 19TH THERE WILL BE AN A MEETING FOR THOSE
OF YOU PLANNING TO COMPETE THIS YEAR

LOCATION: KELLER ISD EDUCATION CENTER
350 KELLER PKWY, KELLER, TX 76248

ROOM: BOARD ROOM

ENTER THROUGH THE MAIN ENTRANCE (PAGE ST SIDE)

TIME: 6:00-7:00PM

RSVP: DI TEAM INTEREST FORM

THANK YOU FOR JOINING US THIS EVENING!

Any questions?

Feel free to contact us if you have any questions that arise after our meeting today.

- X Sarah Briggs: sarah.briggs@kellerisd.net
- X Donna Hodge: donna.hodge@kellerisd.net

Important Dates!

October 16th:
Parent/Student Interest
Form Deadline

October 19th:
Team Meeting: Build
Teams and Find Team
Managers

October 23rd:
Deadline to submit
request for a team
number to Keller ISD